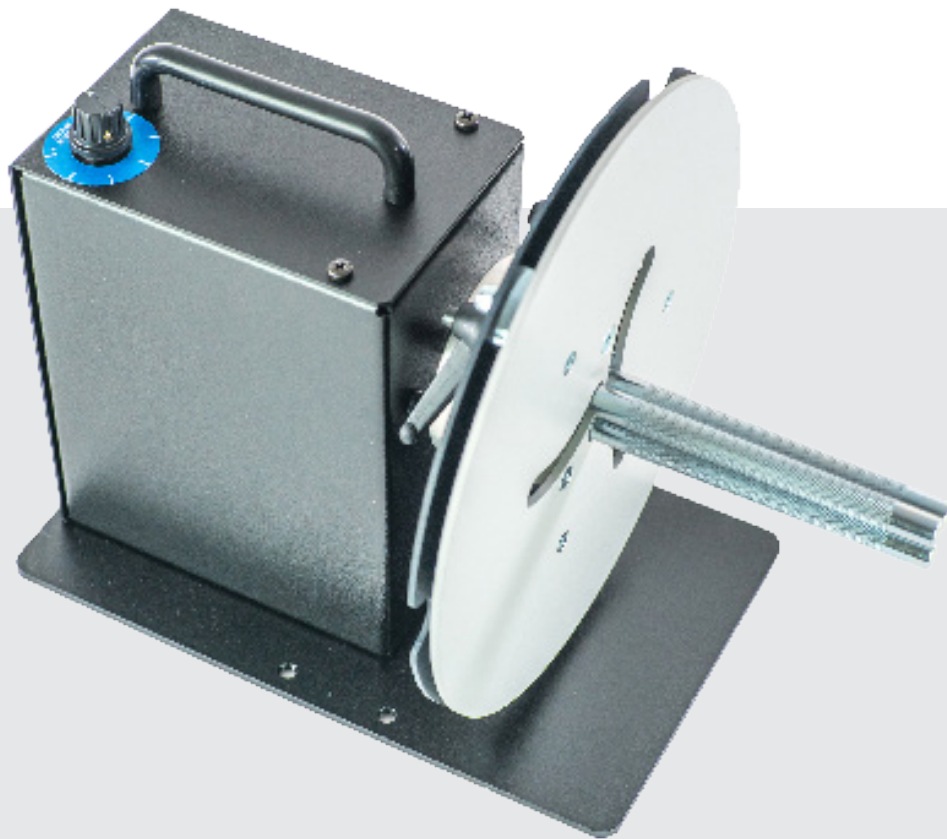




# Labelmate

THE WORLD'S LEADING MANUFACTURER OF LABEL DISPENSERS, REWINDERS, UNWINDERS & COUNTING SOLUTIONS



MC-11 & MC11+

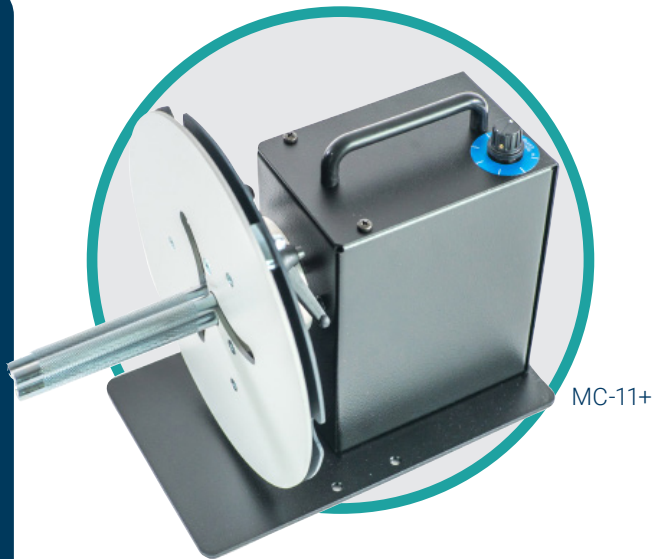
[labelmate.com](http://labelmate.com)

# Mini-CAT

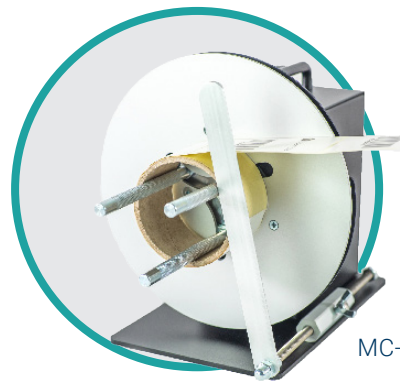
## MINI-CAT REWINDERS MC-11/MC11+

The MINI-CAT rewinders are the world's most popular entry-level label rewinders to be used in combination with small desktop or mid-range barcode printers. With a specially designed bi-directional motor, they offer trouble-free performance at an incredible low cost.

- ✓ Small footprint to fit on any desk
- ✓ Easy setup: attach the labels to the take-up core and ready to start
- ✓ Speed up to 50cm/sec to work with desktop or mid-range barcode printers
- ✓ Bi-Directional
- ✓ Large capacity for roll diameters up to 220mm
- ✓ Employs an adjustable core holder (ACH) enabling the use of varying core sizes from 25mm to 101mm
- ✓ Adjust the rewind force with a built-in potentiometer



MC-11+



MC-11 with Optional APG

## FEATURES

- Maximum Label Roll Weight: 4 KG
- Maximum Roll Diameter: 220 mm
- Maximum Speed: 50 CM/SEC at the beginning of a 76 mm core roll
- An external command interface on the '+' models to support direct control start/stop by the barcode printer (check compatibility with your printer vendor). The MC+ can react to different types of signals provided by the printer. Selection of the signal nature is done via 2 jumpers on the internal PCB. Four modes selectable: Open Collector High Active, Open Collector Low, Logic Level High (MAX10VDC) & Logic Level Low (MAX10VDC). Factory setting is "Open Collector High", other settings on request.

## MINI-CAT-MODELS

P/N	MODEL	DESCRIPTION	MAX LABEL WIDTH
LMR003	MC-11	With Adjustable Core Holder, for rewinding on cores between 25 and 101 mm diameter.	115 mm
LMR032	MC-11+	Including External Control. With Adjustable Core Holder, for rewinding on cores between 25 and 101 mm diameter.	115 mm

## MINI-CAT-OPTIONS

P/N	MODEL	DESCRIPTION
LMX587		Universal Alignment Plate for MC
LMX441	APG-MC	Adjustable Paper Guide. Guides outer edge of label to ensure an even roll edge.
LMX442	STANDARD SHAFT MC	Standard shaft for MC with vanes, bail & internal flange

## DIMENSIONS

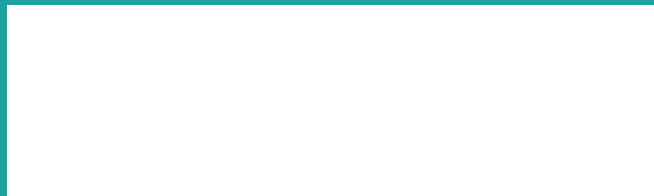
- W x D x H: 220 x 305 x 195 mm
- Shipping Weight: 6 to 8 KG depending on model & selected options

## GENERAL

- Power Supply : 15VDC, 1600 mA
- Limited Warranty of 5 Years, 1 Year on the Power Supply



Your local partner:



**+32 2 375 69 60**

**[brussels@labelmate.com](mailto:brussels@labelmate.com)**

Bergensesteenweg 78  
1651 Lot (Belgium)

**[www.labelmate.com](http://www.labelmate.com)**